

SAMSUNG

USER MANUAL

SM-R170

English (CA). 02/2019. Rev.1.0

www.samsung.com

Table of Contents

Basics

- 3 Read me first
- 4 About the Galaxy Buds
- 5 Package contents
- 6 Device layout
- 8 Preparing the earbuds for use
- 10 Battery
- 16 Battery indicator lights identification

Using the earbuds

- 18 Connecting the earbuds to a mobile device
- 23 Wearing the earbuds
- 24 Using the touchpad
- 27 Using Bixby
- 28 Listening to music
- 29 Using the equalizer
- 29 Using call features
- 30 Using ambient sound mode

Galaxy Wearable App

- 32 Introduction
- 34 Viewing earbud status and customizing settings
- 36 Checking the user manual

Appendix

- 37 Troubleshooting
- 40 Managing the earbuds
- 41 Restarting the earbuds
- 42 Removing the battery

Health and Safety

Basics

Read me first

Please read this manual before using this device to ensure safe and proper use.

- Descriptions are based on the device's default settings.
- Some content may differ from your device depending on the region, service provider, model specifications, or device's software. Images may differ in appearance from the actual product. Content is subject to change without prior notice.
- Before using other devices, make sure they are compatible with the Galaxy Buds. Visit www.samsung.com/ca to see the specifications of compatible mobile devices.
- Prevent the device from being submerged in liquid or exposed to pressurized water jets, such as from a shower. Do not wear the device during activities, such as showering or swimming. Doing so can damage the device.
- Modifying the Galaxy Buds' operating system or installing software from unofficial sources may result in Galaxy Buds malfunctions and data corruption or loss. These actions are violations of your Samsung licence agreement and will void your warranty.
- Some functions may not work as described in this manual, depending on the maker and model of the mobile device you connect to the Galaxy Buds.
- This product includes certain free/open source software. To see the instructions for viewing the open source licence, go to the Samsung website (opensource.samsung.com).

Instructional icons



Warning: situations that could cause injury to yourself or others



Caution: situations that could cause damage to your device or other equipment



Notice: notes, usage tips, or additional information

About the Galaxy Buds

Galaxy Buds are wireless earbuds that allow you to listen to music or answer incoming calls after connecting them to your device, even while doing other activities such as working out.



Do not wear the earbuds in high-traffic areas, such as roads or crosswalks. Doing so may result in accidents due to slowed reaction times.



Package contents

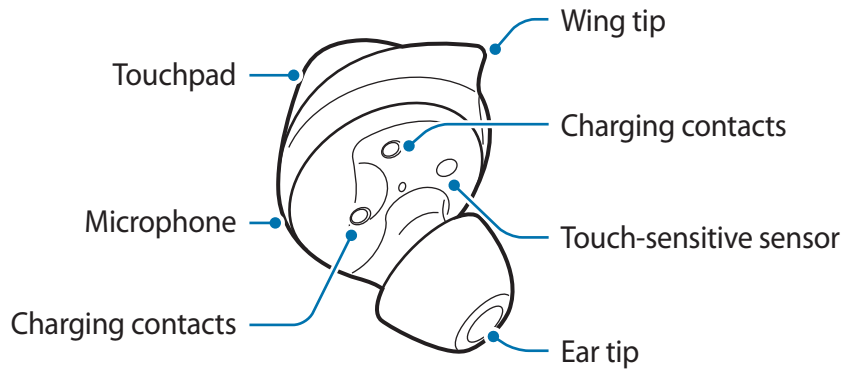
Refer to the quick start guide for package contents.



- The items supplied with the Galaxy Buds, available accessories, and their images may vary depending on the region or service provider.
- The supplied items are designed only for the Galaxy Buds and may not be compatible with other devices.
- Appearances and specifications are subject to change without prior notice.
- You can purchase additional accessories from the Samsung website. Make sure they are compatible with the model before purchase.
- Use only Samsung-approved accessories. Using unapproved accessories may cause performance problems and malfunctions that are not covered by the warranty.
- Availability of all accessories is subject to change, depending entirely on manufacturing companies. For more information about available accessories, refer to the Samsung website.

Device layout

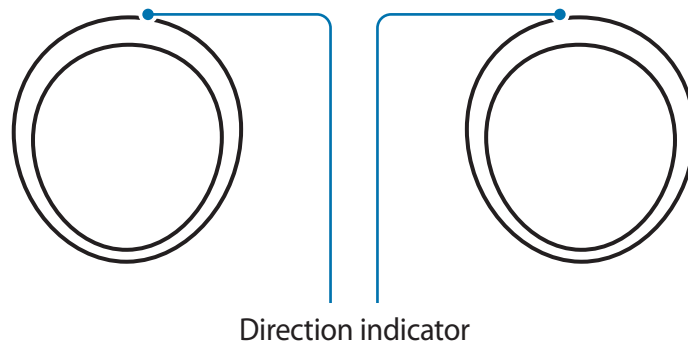
Earbud



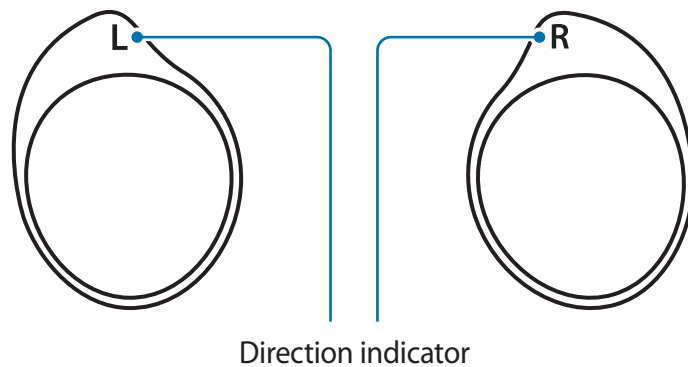
If you use the Galaxy Buds when they are broken, there may be a risk of injury. Use the Galaxy Buds only after they have been repaired at a Samsung Service Centre.

Wing tip

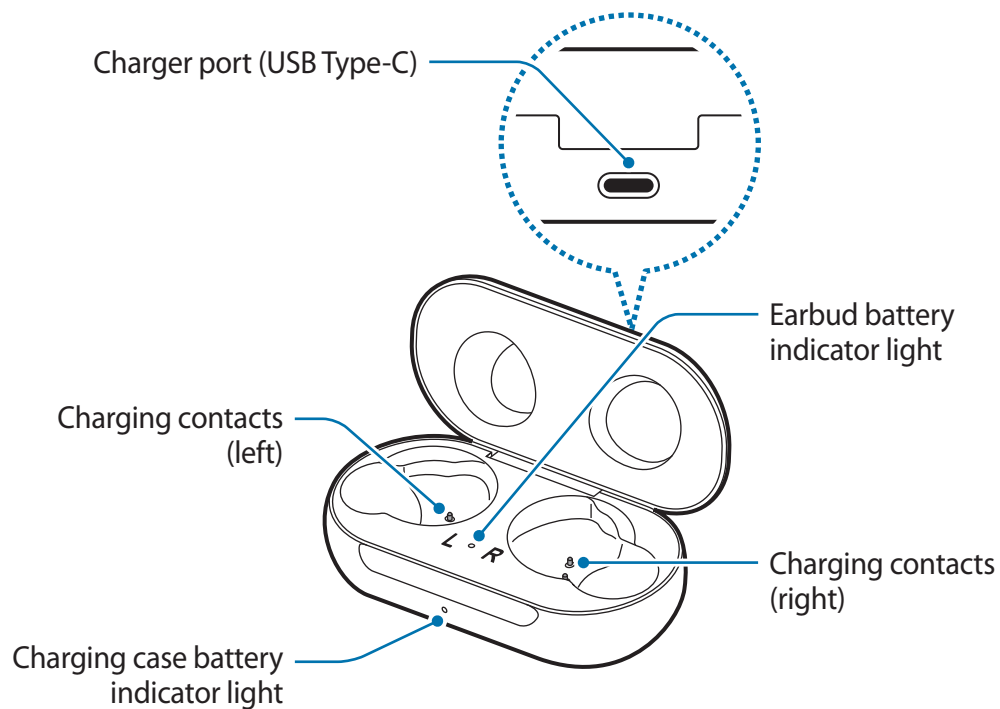
S



M, L



Charging case

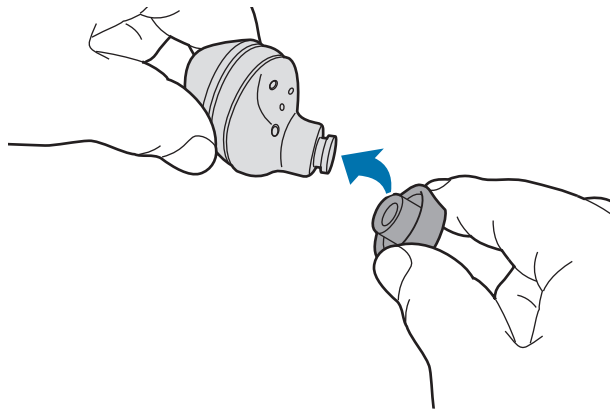


- If there is sweat or liquid on the charging contacts, corrosion may occur on the Galaxy Buds. When there is sweat or liquid on the charging contacts or earbuds, clean them before inserting the earbuds in the charging case.
- Close the charging case when you store or charge the earbuds.

Preparing the earbuds for use

Attaching an ear tip to the earbud

- 1 Select the ear tip that fits your ear.
- 2 Cover the latch at the bottom of the earbud with the ear tip.

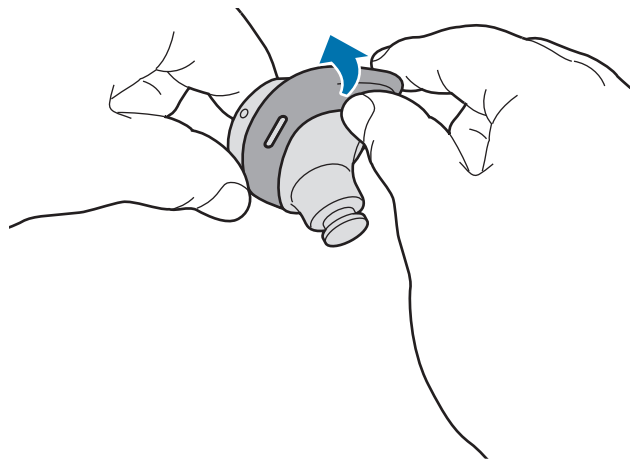


- Do not put the earbuds in your ears without ear tips. Doing so may hurt your ears.
- Do not pull the ear tip excessively when you attach or detach it. The ear tip may tear.

- 3 Follow the same procedure for the opposite earbud.

Attaching a wing tip to the earbud

- 1 Select the wing tip that fits your ear.
- 2 Select the wing tip for the left or right ear.
- 3 Hook the wing tip's groove to earbud's fixation hook and cover the earbud with the wing tip.



- Do not put the earbuds in your ears without wing tips. Doing so may hurt your ears.
- Do not pull the wing tip excessively when you attach or detach it. The wing tip may tear.



Do not put the wing tips on the earbuds in the wrong direction. The earbuds will not fit in your ears properly.

- 4 Follow the same procedure for the opposite earbud.

Battery

Charging the battery

Fully charge the battery before using the earbuds for the first time or when they have been unused for extended periods. The earbuds will power on while charging. When the battery is completely discharged, it needs at least 10 minutes to start to working.

Check the direction of each earbud, insert them into the corresponding slots, and then connect the charger.

The charging case has a built-in battery that is charged along with the earbuds.

You can charge the earbuds by placing them into the charging case without connecting it to an electric socket.



Use only Samsung-approved chargers and cables. Unapproved chargers or cables can cause the battery to explode or damage the Galaxy Buds.

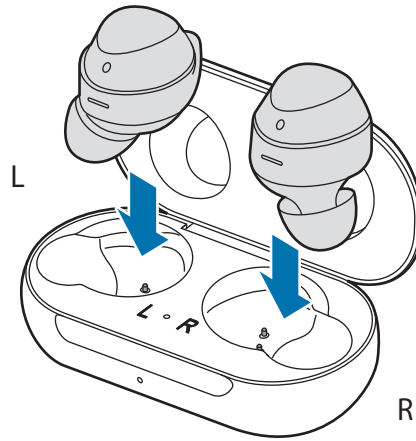


- Connecting the charger improperly may cause serious damage to the charging case. Any damage caused by misuse is not covered by the warranty.
- Use only the USB Type-C cable supplied with the Galaxy Buds. The charging case may be damaged if you use a Micro USB cable.

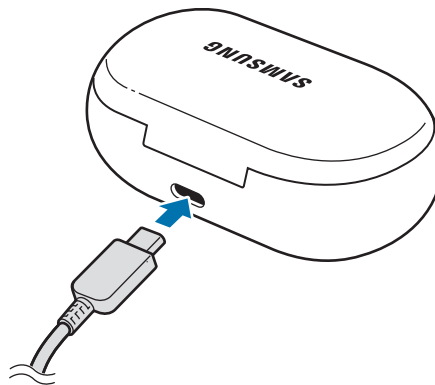


- Chargers are sold separately.
- To save energy, unplug the charger when not in use. The charger does not have a power switch, so you must unplug the charger from the electric socket when not in use to avoid wasting power. The charger should remain close to the electric socket and be easily accessible while charging.
- You cannot use your earbuds' wireless features while charging the battery.
- Close the charging case when you store or charge the earbuds.
- If there is sweat or liquid on the charging contacts, corrosion may occur on the Galaxy Buds. When there is sweat or liquid on the charging contacts or earbuds, clean them before inserting the earbuds in the charging case.
- Do not put the wing tips on the earbuds in the wrong direction. The earbuds will not be charged if they are not properly inserted into the charging case.

- 1 Open the charging case.
- 2 Check the direction of each earbud and correctly insert them into their corresponding slots in the charging case.



- 3 Close the charging case.
- 4 Connect the USB cable to the charger and then plug the USB cable into the charger port.



Connecting the USB cable improperly may cause serious damage to the charging case. Any damage caused by misuse is not covered by the warranty.

- 5 Plug the charger into an electric socket.
The batteries of the earbuds and the charging case are charged simultaneously.
- 6 After fully charging, disconnect the charging case from the charger. First unplug the USB cable from the charging case and then unplug the charger from the electric socket.

Reducing the battery consumption

When you are not using the earbuds, store them in the charged charging case. The touch-sensitive sensor will continue to work while wearing the earbuds and reduce the usage time.

Battery charging tips and precautions

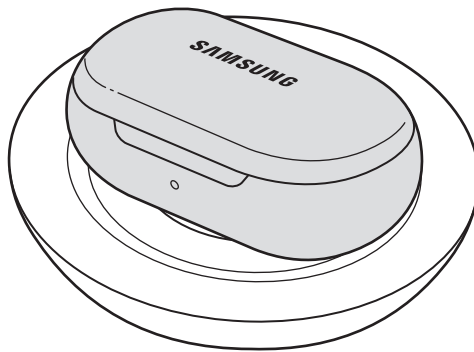
- If there is sweat or liquid on the charging contacts, corrosion may occur on the Galaxy Buds. When there is sweat or liquid on the charging contacts or earbuds, clean them before inserting the earbuds in the charging case.
- Using a power source other than the charger, such as a computer, may result in a slower charging speed due to a lower electric current.
- While charging, the earbuds and the charging case may heat up. This is normal and should not affect the earbuds' lifespan or performance. If the battery gets hotter than usual, the charger may stop charging.
- If the earbuds and charging case are not charging properly, take them with the charger to a Samsung Service Centre.
- Avoid bending the USB cable. Doing so may damage or reduce the lifespan of the USB cable. Never use a damaged USB cable.

Wireless charging

The charging case has a built-in wireless charging coil. You can charge the battery by using a wireless charger or another device that functions as a wireless charger.

Charging the battery with a wireless charger

- 1 Open the charging case.
- 2 Check the direction of each earbud and correctly insert them into their corresponding slots in the charging case.
- 3 Close the charging case.
- 4 Place the centre of the charging case on the centre of the wireless charger.



- 5 After fully charging, disconnect the charging case from the wireless charger.



Precautions for wireless charging


Do not place the charging case on the wireless charger when conductive materials, such as metal objects and magnets, are placed between the charging case and the wireless charger.

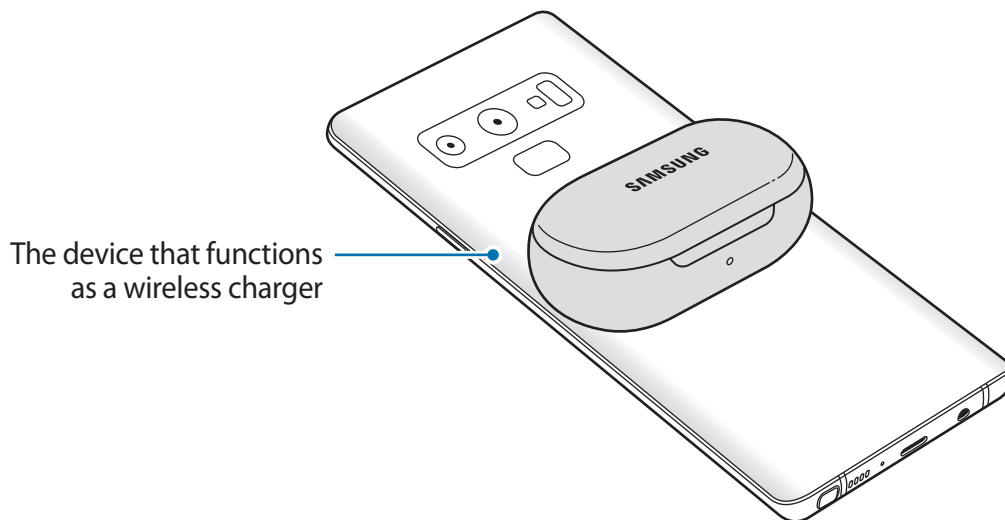
The charging case may not charge properly or may overheat, or the charging case and the cards may be damaged.



Use Samsung-approved wireless chargers. If you use other wireless chargers, the battery may not charge properly.

Charging the battery using PowerShare

- 1 Open the charging case.
 - 2 Check the direction of each earbud and correctly insert them into their corresponding slots in the charging case.
 - 3 Close the charging case.
 - 4 Place the centre of the charging case's back on the device that functions as a wireless charger.
-  The location of the wireless charging coil may vary by device. Adjust the device and the charging case to make a strong connection.



5 After fully charging, disconnect the charging case from the device.



- To charge properly, do not move or use the device or charging case while charging.
- If you charge the Galaxy Buds while charging the device that functions as a wireless charger, the charging speed may decrease or the Galaxy Buds may not charge properly, depending on the charger type.
- Charging speed or efficiency may vary, depending on the device's condition or the surrounding environment.
- If the remaining battery power of the device that functions as a wireless charger drops below a certain level, power sharing will stop.

Checking the battery level

Connect the earbuds to your mobile device, launch the **Galaxy Wearable** app on your mobile device, and view the battery status of each earbud on the **Earbuds** card. Refer to [Connecting the earbuds to a mobile device](#) for more information.



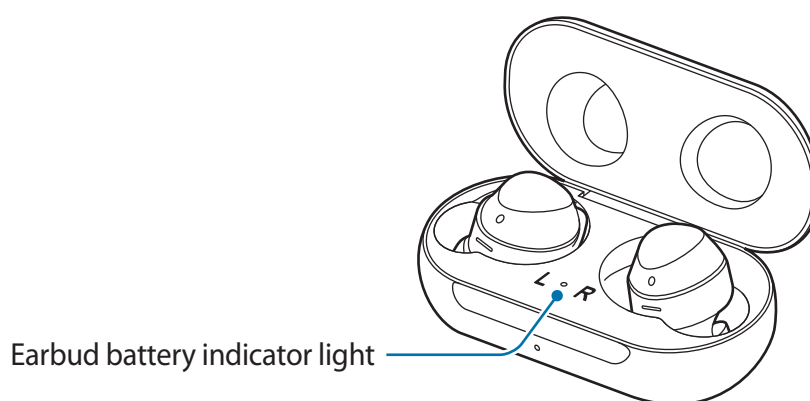
When the remaining battery level is low, a notification will appear on the mobile device's notification panel.

Battery indicator lights identification

The battery indicator lights inform you of your earbuds and the charging case's charging status.

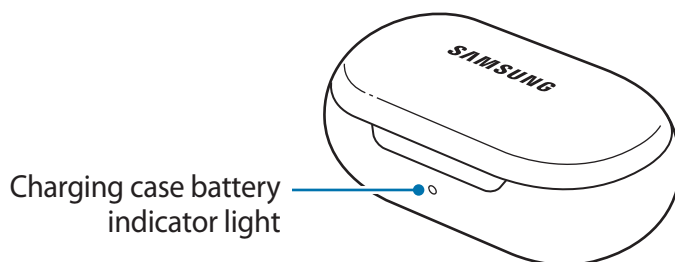
The earbud battery indicator light is located inside of the charging case and shows the charging status of the earbuds. The charging case battery indicator light on the front of the charging case indicates the charging status of the case itself.

Earbud battery indicator light



Colour	Status
Continuously on red	• Charging
Continuously on green	• Fully charged
Flashes red	• Charging blocked due to abnormal temperatures

Charging case battery indicator light



Colour	Status
Continuously red	• Charging
Continuously green	• Fully charged
Flashes red (rapid pace)	• Charging blocked due to abnormal temperatures
Flashes red (slow pace)	• Low battery
Red (stays on for five seconds after closing the charging case)	• Battery power is low (lower than 30 %)
Yellow (stays on for five seconds after closing the charging case)	• Battery power is moderate (between 30 % and 60 %)
Green (stays on for five seconds after closing the charging case)	• Battery power is high (more than 60 %)



- The charging case battery indicator light flashes red when the external power is cut off during charging.
- If the battery indicator lights do not work as described, disconnect the charger from the charging case and reconnect it.

Using the earbuds

Connecting the earbuds to a mobile device

Connecting the earbuds to a Samsung mobile device for the first time

- 1 Check the direction of each earbud, correctly insert them into their corresponding slots in the charging case, and then close it.

If the earbud battery indicator light does not flash, connect the charging case to the charger and charge them for more than 10 minutes.

- 2 Open the charging case.

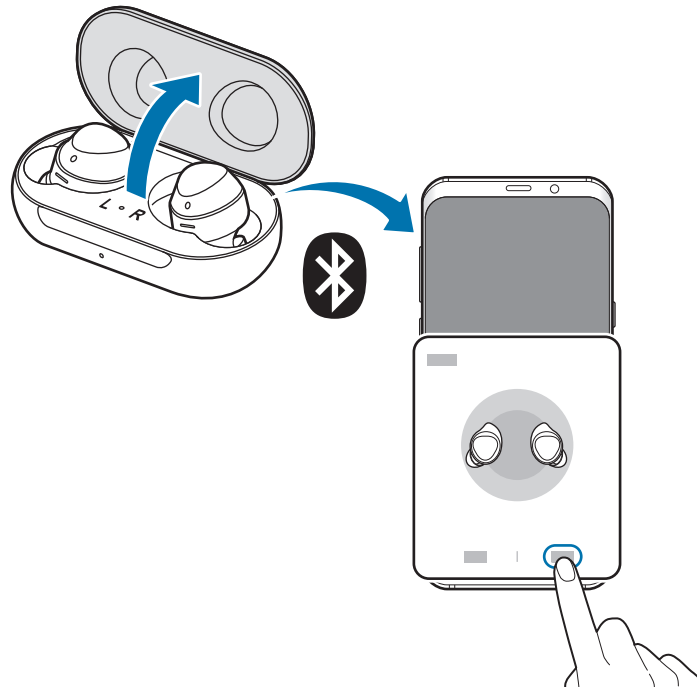
The earbuds will enter Bluetooth pairing mode automatically and a pop-up window will appear on your mobile device.

If the pop-up window does not appear or if you want to connect to a non-Samsung mobile device that also uses the Android OS, refer to [Connecting to a non-Samsung mobile device that also uses the Android OS \(or, the connection pop-up window does not appear\)](#).



If the charging case battery indicator light flashes red, remove the earbuds from the charging case and insert them into the case again.

- 3 On your mobile device, tap **Connect** on the pop-up window.



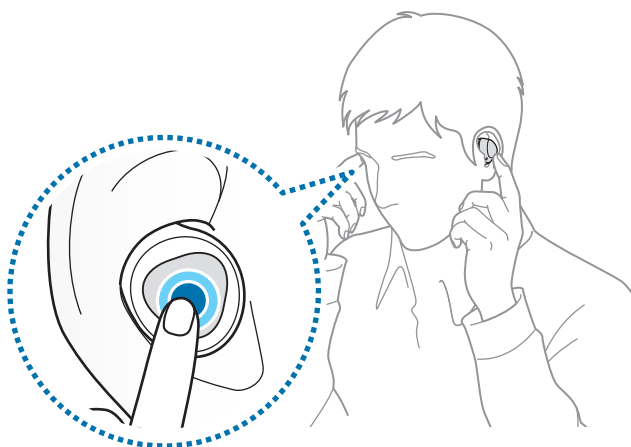
The connection pop-up window will only appear on Samsung mobile devices running Android 7.1.1 or later that have the SmartThings app installed. If the pop-up window does not appear, update the SmartThings app to the latest version.

4 Follow the on-screen instructions to complete the connection.

Once the earbuds are connected to your mobile device, they will automatically attempt to connect to your mobile device whenever you open the charging case while the earbuds are inside it.



- If the earbuds do not connect to a mobile device within three minutes, Bluetooth pairing mode will be deactivated. Close the charging case again and open it. The earbuds will reenter Bluetooth pairing mode.
- If you want to connect to another mobile device after a connection has been established, turn off the Bluetooth feature of the previously connected mobile device first so that the earbuds do not connect with the previous device.
- If the earbuds do not connect to a mobile device, the connection pop-up window does not appear, or your mobile device cannot find the earbuds, tap and hold both earbuds' touchpads while wearing them to enter Bluetooth pairing mode manually. When Bluetooth pairing mode is entered, you will hear a sound. However, you cannot use this method when you are playing music after setting the volume adjustment as a preset tap-and-hold feature.



Connecting to a non-Samsung mobile device that also uses the Android OS (or, the connection pop-up window does not appear)

- 1 On your mobile device, launch **Galaxy Store** or **Play Store** and download the Galaxy Wearable app.



- You can download the Galaxy Wearable app only on mobile devices running Android operating system 5.0 (API 21) or later, and with 1.5 GB of RAM or more.
- You can change the language of the Galaxy Wearable app on your connected mobile device. On your mobile device, launch **Settings** → **General management** → **Language and input** → **Language**. English may appear by default if the selected language on the Settings screen is not supported on the Galaxy Wearable app.

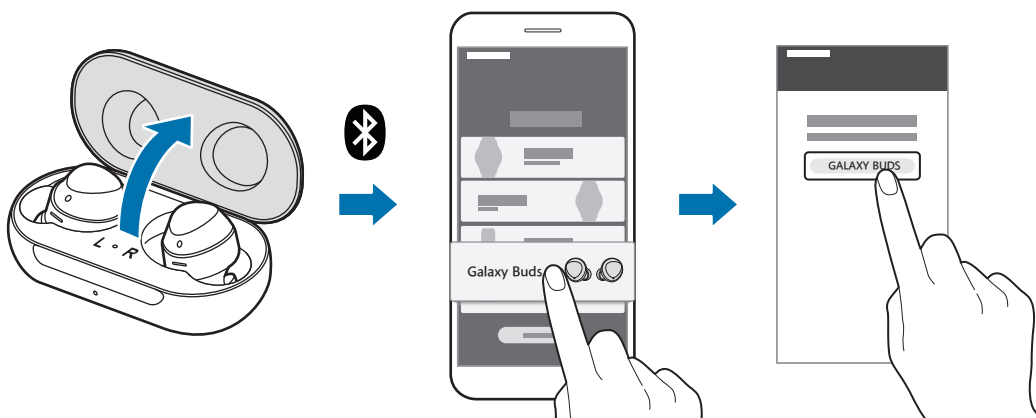
- 2 Check the direction of each earbud, correctly insert them into their corresponding slots in the charging case, and then close it.

If the earbud battery indicator light does not flash, connect the charging case to the charger and charge them for more than 10 minutes.

- 3 Open the charging case.

The earbuds will enter Bluetooth pairing mode automatically.

- 4 On your mobile device, launch the **Galaxy Wearable** app and follow the on-screen instructions to complete the connection.



Tips and precautions when connecting to the mobile device

- If the earbuds do not connect to a mobile device within three minutes, Bluetooth pairing mode will be deactivated. Close the charging case again and open it. The earbuds will reenter Bluetooth pairing mode.
- If you want to connect to another mobile device, close the charging case again and open it. The earbuds will enter Bluetooth pairing mode.
- If the earbuds do not connect to a mobile device, the connection pop-up window does not appear, or your mobile device cannot find the earbuds, tap and hold both earbuds' touchpads while wearing them to enter Bluetooth pairing mode manually. When Bluetooth pairing mode is entered, you will hear a sound. However, you cannot use this method when you are playing music after setting the volume adjustment as a preset tap-and-hold feature.
- Connection methods may vary depending on your device and software version.
- You can download the Galaxy Wearable app only on mobile devices running Android operating system 5.0 (API 21) or later, and with 1.5 GB of RAM or more.

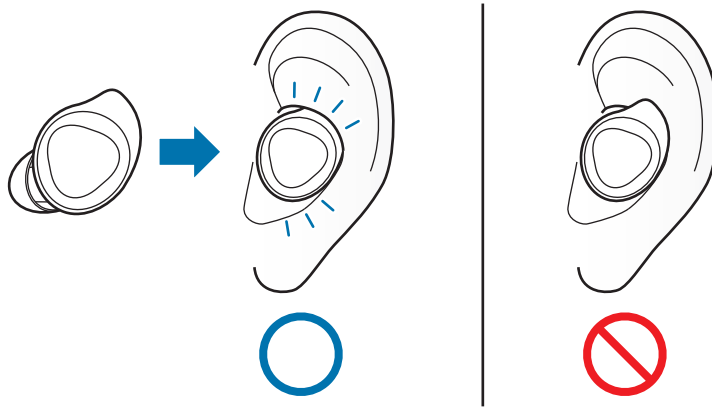
Notices for using Bluetooth

Bluetooth is a wireless technology standard that uses a 2.4 GHz frequency to connect to various devices over short distances. It can connect and exchange data with other Bluetooth enabled devices, such as mobile devices, without connecting via cables.

- To avoid problems when connecting your earbuds to another device, place the devices close to each other.
- Ensure that your earbuds and the other Bluetooth device are within the Bluetooth connection range (10 m). The distance may vary depending on the environment the devices are used in.
- Ensure that there are no obstacles between the earbuds and a connected device, including human bodies, walls, corners, or fences.
- Do not touch the Bluetooth antenna of a connected device.
- Bluetooth uses the same frequency as some industrial, scientific, medical, and low power products and interference may occur when making connections near these types of products.
- Some devices, especially those that are not tested or approved by the Bluetooth SIG, may be incompatible with the earbuds.
- Do not use the Bluetooth feature for illegal purposes (for example, pirating copies of files or illegally tapping communications for commercial purposes).

Wearing the earbuds

Insert the wing tips into your ears and adjust accordingly to fit your ears.



The device and some accessories (sold separately) contain magnets. The American Heart Association (US) and the Medicines and Healthcare Products Regulatory Agency (UK) both warn that magnets can affect the operation of implanted pacemakers, cardioverters, defibrillators, insulin pumps or other electro medical devices (collectively, “Medical Device”) within the range of 15 cm (6 inches). If you are a user of any of these Medical Devices, **DO NOT USE THIS DEVICE AND SOME ACCESSORIES (SOLD SEPARATELY) UNLESS YOU HAVE CONSULTED WITH YOUR PHYSICIAN.**



Do not store your device and some accessories (sold separately) near magnetic fields. Magnetic stripe cards, including credit cards, phone cards, passbooks, and boarding passes, may be damaged by magnetic fields.

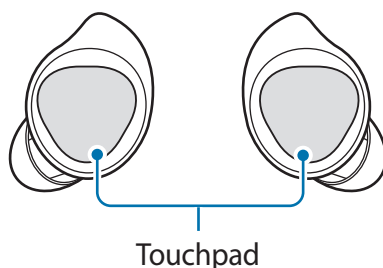


- If the touch-sensitive sensor does not make contact with your ear, the earbud may not work. If you do not hear a sound informing you that the earbud is detected, change the wing tips and ear tip to the versions that fit your ears.
- If you wear a single earbud in your ear, you will hear the sound in mono. It will automatically switch to stereo mode when you wear both earbuds in your ears.
- Follow all posted warnings and directions from authorized personnel in areas where the use of wireless devices is restricted, such as airplanes and hospitals.

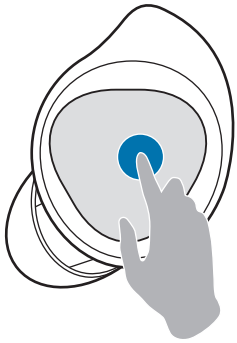
- 1 Check the direction of each earbud and put them in your ears with the wing tip facing upwards until they sit comfortably in your ears.
- 2 Adjust the earbuds by rotating them to the left or right to fit your ears.
The touch-sensitive sensor will automatically detect that you are wearing the earbuds when you put them on. The earbud will emit a sound informing you that the earbud is detected.

Using the touchpad

You can control music playback, answer or reject calls, and start a conversation with Bixby using the touchpad.



- To avoid hurting your ears, do not apply excessive pressure to the touchpad with your fingertips.
- To avoid damaging the touchpad, do not tap it with anything sharp.



Single tap

- Play or pause track.



Double tap

- Play next track.
- Answer or end a call.
- Place the current call on hold and answer the second call.
- Switch between the current call and the held call.



Triple tap

- Play previous track.
 - If you triple-tap three seconds or more after a track begins playing, it will start the track from beginning. Triple-tap the touchpad within three seconds of when a track begins playing to play the previous track.



Tap and hold

- Activate a preset feature.
 - The voice command feature is set by default. Refer to [Setting a preset tap-and-hold feature](#) for more information about changing preset menus.
- Decline call.
- Turn the microphone on or off during a call.
 - This will not display anything on the mobile device.
- Retrieve a held call after ending a current call.



If the earbuds do not connect to a mobile device, the connection pop-up window does not appear, or your mobile device cannot find the earbuds, tap and hold both earbuds' touchpads while wearing them to enter Bluetooth pairing mode manually. When Bluetooth pairing mode is entered, you will hear a sound. However, you cannot use this method when you are playing music after setting the volume adjustment as a preset tap-and-hold feature.


Using the touchpad lock feature

You can prevent unintended actions by using the touchpad lock feature.

- 1 Launch the **Galaxy Wearable** app on the mobile device.
- 2 Tap **Touchpad**.
- 3 Tap the **Lock touchpad** switch to activate it.

Setting a preset tap-and-hold feature

You can select a preset tap-and-hold feature of each earbud to activate features quickly and conveniently.

- 1 Launch the **Galaxy Wearable** app on the mobile device.
 - 2 Tap **Touchpad**.
 - 3 Tap **Left** or **Right** under **Tap and hold touchpad**.
 - 4 Select a feature that you want to use as a preset tap-and-hold feature.
 - **Voice command:** Start a conversation with Bixby.
 - **Quick ambient sound:** Temporarily hear external sounds around you for up to one minute while decreasing the music volume.
 - **Volume down/Volume up:** Adjust the volume.
-  • If you select volume adjustment feature as one side's preset tap-and-hold feature, the other side's preset tap-and-hold feature is also automatically specified to volume adjustment feature.
- When volume adjustment feature has already selected and you try to change the one side's preset tap-and-hold feature, the other side's preset tap and hold feature is automatically specified to Bixby.

Using Bixby



- Bixby is only available in some languages, and certain features may not be available, depending on your region.
- This feature is available only when a mobile device that supports Bixby is connected.

1 Tap and hold the touchpad.

2 Say a voice command and release your finger from the touchpad.

If the Galaxy Buds recognize the command, the Galaxy Buds will perform the corresponding action.

To repeat a voice command or say different command, tap and hold the touchpad.

Tips for better voice recognition

- Speak clearly.
- Speak in quiet places.
- Do not use offensive or slang words.
- Avoid speaking in dialectal accents.

The Galaxy Buds may not recognize your commands or may perform unwanted commands, depending on your surroundings or how you speak.

Listening to music

Listen to music saved in your mobile device by connecting the earbuds to the mobile device. You can stream music played from the connected mobile device.

On your mobile device, launch a music player app and play music.

You can listen to music through your earbuds.

Playing or pausing the track

Tap the touchpad to play and pause the track.

Playing the next track

Double-tap the touchpad to play the next track during playback.

Playing the previous track

Tap the touchpad three times to play the previous track during playback.



If you triple-tap three seconds after a track begins playing, it will start the track from beginning. Triple-tap the touchpad within three seconds of when a track begins playing to play the previous track.

Adjusting the volume

Adjust the volume with your connected mobile device.

Or, you can adjust the volume with the touchpad after setting it as a preset tap-and-hold feature. Refer to [Setting a preset tap-and-hold feature](#) for more information about preset menus.

To increase the volume, tap and hold the right earbud and release your finger when you reach the desired volume.


To decrease the volume, tap and hold the left earbud and release your finger when you reach the desired volume.



- Adjust the volume via your connected mobile device if a sound is low in your earbuds while at full volume.
- If you connect the earbuds to your mobile device while listening to music, the volume may change.

Using the equalizer

You can select from five different equalizer presets.

- 1 Launch the **Galaxy Wearable** app on the mobile device.
- 2 Tap  on the **Equalizer** card.
- 3 Select a preset you want to use.

Using call features

When the earbuds are connected to a mobile device, you can answer and control calls from the connected mobile device.

Answering or declining a call

When a call comes in while you are wearing the earbuds, they will emit a sound and a voice notification will inform you of the incoming call's phone number.

To answer the call, double-tap the touchpad.

To decline the call, tap and hold the touchpad.



If you are not notified of the incoming call's phone number via voice notification, launch the **Galaxy Wearable** app on the mobile device, tap **Notifications** → **Manage notifications**, and then tap the **Incoming call** switch to activate the feature.

Answering a second call

When a second call comes in during a call, the earbuds will emit a sound.

To end the current call and answer the second call, tap and hold the touchpad.

To place the current call on hold and answer the second call, double-tap the touchpad.

To switch between the current call and the held call, double-tap the touchpad during a call.

Turning off the microphone

Tap and hold the touchpad during a call to turn off the microphone so that the other party cannot hear you.

Ending a call

Double-tap the touchpad to end the current call.

Using ambient sound mode

Hear your surroundings while you are listening to music outdoors, so you can quickly detect any potentially dangerous situations.

Launch the **Galaxy Wearable** app on the mobile device, tap **Ambient sound**, and then tap the switch to activate the feature.

The ambient sound mode is activated and you can hear external sounds around you.



When you activate ambient sound mode, you may hear sudden loud external sounds.



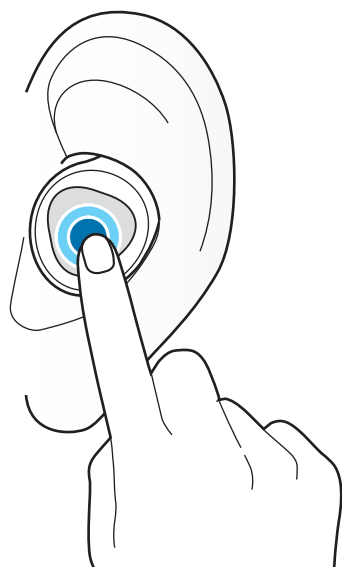
- If you use the ambient sound volume feature in ambient sound mode, you can control the volume depending on the situation or place. Refer to [Ambient sound](#) for more information.
- If you use the voice focus feature in ambient sound mode, you can make voices stand out more clearly. Refer to [Ambient sound](#) for more information.
- During a call, ambient sound mode will turn off automatically. After the call, the mode returns to the previous state.
- In ambient sound mode, feedback may occur when adjusting the volume or touching the microphone.
- The feature can be used after you connect your earbuds to the Galaxy Wearable app for the first time.

Activating the quick ambient sound mode

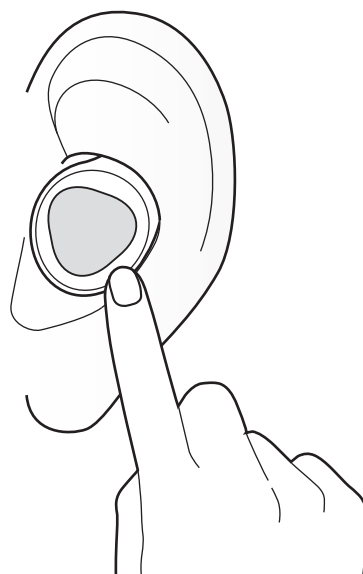
You can activate the quick ambient sound mode for up to one minute with the touchpad after setting it as a preset tap-and-hold feature, even if you have not activated ambient sound mode from your mobile device. Refer to [Setting a preset tap-and-hold feature](#) for more information about preset menus.

Tap and hold the touchpad to activate the ambient sound mode and temporarily hear external sounds around you. If you are listening to music, its volume will be turned down.

When you release your finger from the touchpad, the ambient sound mode will be deactivated and music volume will be turned up again.



Activating the quick ambient sound mode



Deactivating the quick ambient sound mode

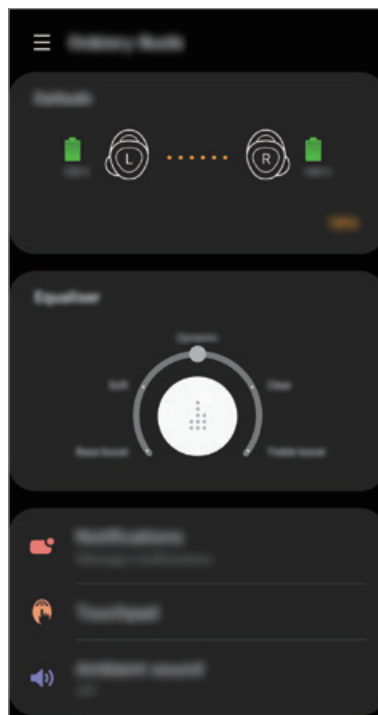
Galaxy Wearable App

Introduction

To connect the earbuds to a mobile device, you must install the Galaxy Wearable app on your mobile device. Using the Galaxy Wearable app, you can customize your earbud settings.

Launch the **Galaxy Wearable** app on the mobile device.


If it is the first time connecting the earbuds and a mobile device, refer to [Connecting the earbuds to a mobile device](#) for more information.



Some features may not be available, depending on the type of connected mobile device.

Disconnecting devices from the earbuds

Insert the earbuds into the charging case. The Bluetooth connection will end.

To manually disconnect the earbuds from your mobile device, launch the **Galaxy Wearable** app on the mobile device and tap  → **Disconnect**. Or, on your mobile device, tap **Settings** → **Connections** → **Bluetooth** and unpair the earbuds and your mobile device.



The earbuds do not have a power-on/off function. If the earbuds are not used for a predefined length of time after being removed from your ears, the earbuds will enter sleep mode and the mobile device will be disconnected. To enter Bluetooth pairing mode close the charging case and open it again.

Reconnecting devices with the earbuds that temporarily disconnected

To reconnect earbuds that temporarily disconnected from a device, insert them into the charging case and close it. Then, open the charging case again. Alternatively, tap **CONNECT** on the top right of the **Galaxy Wearable** app on your mobile device.

Connecting with new earbuds

You can temporarily disconnect the earbuds from your mobile device and connect additional ones.

Launch the **Galaxy Wearable** app on the mobile device and tap  → **Connect new device**.

Connecting with other devices

Launch the **Galaxy Wearable** app on the mobile device and tap  → **Disconnect**. Or, on your mobile device, tap **Settings** → **Connections** → **Bluetooth** and unpair the earbuds and your mobile device.

The connection between the earbuds and previous mobile device will end.

After disconnecting the earbuds from the previous mobile device, you can connect the earbuds with another mobile device.

Close the charging case again and open it to enter the Bluetooth pairing mode. Launch the **Galaxy Wearable** app and follow the on-screen instructions to complete the connection.

Checking the user manual

You can check the earbuds' user manual on your mobile device.

Launch the **Galaxy Wearable** app on the mobile device and tap  → **User manual**.

Viewing earbud status and customizing settings

View and customize the status and settings of the earbuds connected to your mobile device.

Launch the **Galaxy Wearable** app on the mobile device.

Earbuds

View the connection status and the remaining battery level.

To view how to control the touchpad, tap **Tips**.

Equalizer

Turn the equalizer mode off and on and select a preset you want to use.

Notifications

You will receive notifications from the mobile device's apps via the earbuds. If you want to use this feature, tap the switch to activate it.

- **Manage notifications:** Select the apps you want to receive notifications from and change the notification settings for each app.
- **Read aloud while using phone:** You can set the earbuds to receive notifications from the mobile device even when you are using the mobile device.

Touchpad

Change the touchpad usage settings.

- **Lock touchpad:** Activate the lock feature. To use the touchpad lock feature, tap the switch to activate it. Refer to [Using the touchpad lock feature](#) for more information.
- **Touch and hold touchpad:** Select a feature to be used as a preset tap-and-hold feature. Refer to [Setting a preset tap-and-hold feature](#) for more information.

Ambient sound

Hear your surroundings while you are listening to music outdoors, so you can quickly detect any potentially dangerous situations. If you want to use this feature, tap the switch to activate it.



You can temporarily activate the ambient sound mode with the touchpad, for up to one minute, even if you do not activate the ambient sound mode on your mobile device. Refer to [Activating the quick ambient sound mode](#) for more information.

- **Ambient sound volume:** You can control the volume to adjust for the situation or place.
- **Voice focus:** You can make voices stand out more clearly. To use the voice focus feature, tap the switch to activate it.

Find My Earbuds

If you misplace your earbuds, use the Galaxy Wearable app on your mobile device to find them.

1 Launch the **Galaxy Wearable** app on the mobile device and tap **Find My Earbuds**.

2 Tap

Your earbuds will start beeping.

3 Tap



Do not use this feature when wearing the earbuds as it may cause hearing damage.

About earbuds

View the information of the earbuds.


- **Update earbuds software:** Update the Galaxy Buds to the latest software when they have more than 30 % of remaining battery power.
- **Legal information:** View the legal information for the Galaxy Buds.
- **Device name:** Check the name of the Galaxy Buds.
- **Reset earbuds:** Return the Galaxy Buds to the default settings.
- **Tips:** Check the tips for the Galaxy Buds.
- **Battery information:** Check battery information for the earbuds and charging case.

About Galaxy Wearable

View the Galaxy Wearable app's version information. If necessary, tap **Updates available** to update the Galaxy Wearable app to the latest version.

Checking the user manual

You can check the earbuds' user manual on your mobile device.

Launch the **Galaxy Wearable** app on the mobile device and tap  → **User manual**.

Appendix

Troubleshooting

Before contacting a Samsung Service Centre, please attempt the following solutions. Some situations may not apply to your earbuds.

Your earbuds do not work

- The battery may be completely discharged. Charge the battery completely before using the earbuds.
- If an earbud's touch-sensitive sensor does not make contact with your ear, the earbud may not work. If you do not hear a sound informing you that the earbuds are detected, remove the earbuds from your ears and put them in again.
- If the touchpad does not recognize the earbuds or the earbuds do not work, insert the earbuds into their corresponding slots in the charging case and remove them after seven seconds or more.

Bluetooth device cannot locate your earbuds

- Close the charging case and reopen it to enter the Bluetooth pairing mode.
- Ensure that your earbuds and the other Bluetooth device are within the Bluetooth connection range (10 m). The distance may vary depending on the environment the devices are used in.

If the tips above do not solve the problem, contact a Samsung Service Centre.

A Bluetooth connection is not established or your earbuds and the mobile device are disconnected

- Ensure there are no obstacles, such as walls or electrical equipment, between the devices.
- Ensure that the latest version of the Galaxy Wearable app is installed on the mobile device. If necessary, update the Galaxy Wearable app to the latest version.
- Ensure that your earbuds and the other Bluetooth device are within the Bluetooth connection range (10 m). The distance may vary depending on the environment the devices are used in.
- Restart the mobile device and relaunch the Galaxy Wearable app.

The battery does not charge properly (For Samsung-approved chargers)

- Ensure that the charging contacts of the earbuds and the charging case are in contact with each other.
- Ensure that the charger is connected properly to the charging case.
- If the battery contacts are dirty, the battery may not charge properly. Wipe both gold-coloured contacts with a dry cloth and try charging the battery again.
- Visit a Samsung Service Centre and have the battery replaced.

The charging time and the battery life is different between the earbuds

- The charging time may differ between the two earbuds even if they started charging at the same time.
- The charging time and the remaining battery may differ between the two earbuds due to different inner components.

The battery depletes faster than when first purchased

- When you expose the Galaxy Buds or the battery to very cold or very hot temperatures, the useful charge may be reduced.
- The battery is consumable and the useful charge will get shorter over time.

You cannot hear others speaking

- Adjust the earbud volume.
- Adjust the volume on the connected device when you cannot hear sounds on your earbuds at full volume.

Sound echoes during a call

Adjust the volume with the connected mobile device or move to another area.

Audio quality is poor

- Wireless network services may be disabled due to issues with the service provider's network. Ensure to keep the earbuds away from electromagnetic waves.
- Ensure that your earbuds and the other Bluetooth device are within the maximum Bluetooth range (10 m). The distance may vary depending on the environment the devices are used in.
- You may experience drops in volume or noise depending on the connected device's volume. To avoid this, appropriately adjust the connected device's sound.

Your earbuds sound comes slower than the screen when playing videos and games

The earbuds may have a time lag between the video and sound output when playing videos or games when connected to a mobile device.

Your Galaxy Buds are hot to the touch

When you use the Galaxy Buds for an extended period of time, they may feel hot to the touch. This is normal and should not affect your Galaxy Buds' lifespan or performance.

If the Galaxy Buds overheat or feel hot for a prolonged period, do not use them for a while. If the Galaxy Buds continue to overheat, contact a Samsung Service Centre.

A small gap appears around the outside of the Galaxy Buds

- This gap is a necessary manufacturing feature and some minor rocking or vibration of parts may occur.
- Over time, friction between parts may cause this gap to expand slightly.

Managing the earbuds

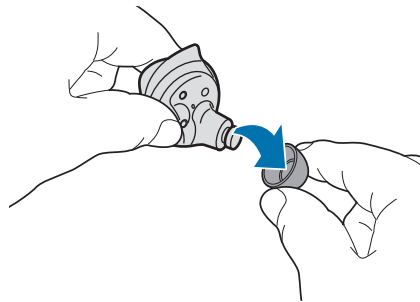
Basic maintenance

- Use a soft, dry cloth to clean the earbuds after use.
- Keep the earbuds dry. Prevent liquid from contacting or entering the earbuds.

Cleaning the receiver

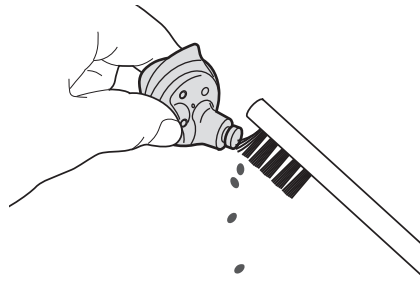
If the volume is lower than it should be with the current setting, clean the receiver.

- 1 Remove the ear tip from the protruding part at the bottom of the earbud.



Do not pull the ear tip excessively when you attach or detach it. The ear tip may tear.

- 2 Remove any earwax or debris from the receiver with the brush or other tools.

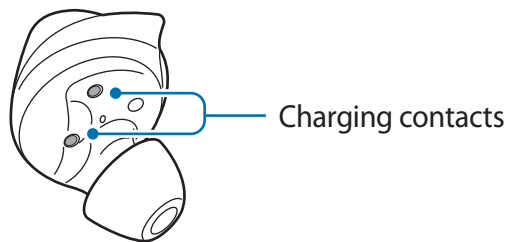


Do not use excessive force while removing earwax or debris. The receiver may be damaged.

- 3 Cover the earbud with the ear tip.

Cleaning the charging contacts

If the battery does not charge properly, wipe both gold-coloured contacts with a dry cloth.



Restarting the earbuds

If the touchpad becomes unresponsive or the earbuds do not work properly, restart the earbuds.

To reset and restart the earbuds, insert the earbuds into their corresponding slots in the charging case and remove them after seven seconds or more.



If the charging case has low battery, connect the charging case to the charger first.

Removing the battery

- **To remove the battery, contact an authorized service centre.**
- For your safety, you **must not attempt to remove** the battery. If the battery is not properly removed, it may lead to damage to the battery and device, cause personal injury, and/or result in the device being unsafe.
- Samsung does not accept liability for any damage or loss (whether in contract or tort, including negligence) which may arise from failure to precisely follow these warnings and instructions, other than death or personal injury caused by Samsung's negligence.

Health and Safety

Please read this important safety information before you use the device. It contains general safety information for devices and may include content that does not apply to your device. Follow the warning and caution information to prevent injury to yourself or others and to prevent damage to your device.



The term 'device' refers to the product and its charger, the items supplied with the product, and any Samsung-approved accessories used with the product.



Warning: Failure to comply with safety warnings and regulations can cause serious injury or death.

Do not use damaged power cords or plugs, or loose electrical sockets

Unsecured connections can cause electric shock or fire.

Do not touch the device, power cords, plugs, or the electric socket with wet hands or other wet body parts

Doing so may cause electric shock.

Do not pull the power cord excessively when disconnecting it

Doing so may cause electric shock or fire.

Do not bend or damage the power cord

Doing so may cause electric shock or fire.

Do not use the device with wet hands while the device is charging

Doing so may cause electric shock.

Do not directly connect together the charger's positive and negative terminals

Doing so may cause fire or serious injury.

Do not use your device outdoors during a thunderstorm

Doing so may result in electric shock or device malfunction.

Use manufacturer-approved chargers, accessories, and supplies

- Using generic chargers may shorten the life of your device or cause the device to malfunction. They may also cause a fire or cause the battery to explode.
- Use only a Samsung-approved charger specifically designed for your device. An incompatible charger can cause serious injuries or damage to your device.
- Samsung cannot be responsible for the user's safety when using accessories or supplies that are not approved by Samsung.

Do not carry your device in your back pockets or on your waist

- The device may be damaged, explode, or result in a fire if too much pressure is applied to it.
- You may be injured if you are bumped or fall.

Do not drop or cause an impact to the charger or the device

Handle and dispose of the device and charger with care

- Never dispose of the device in a fire. Never place the device on or in heating devices, such as microwave ovens, stoves, or radiators. The device may explode when overheated. Follow all local regulations when disposing of used battery or device.
- Never crush or puncture the device.
- Avoid exposing the device to high external pressure, which can lead to an internal short circuit and overheating.

Protect the device and charger from damage

- Avoid exposing your device to very cold or very hot temperatures.
- Extreme temperatures can damage the device and reduce the charging capacity and life of your device and battery.
- Never use a damaged charger or device.

Do not store your device near or in heaters, microwaves, hot cooking equipment, or high pressure containers

- The battery may leak.
- Your device may overheat and cause a fire.

Do not use or store your device in areas with high concentrations of dust or airborne materials

Dust or foreign materials can cause your device to malfunction and may result in fire or electric shock.

Prevent the charger from contact with conductive materials, such as liquids, dust, metal powders, and pencil leads. Do not touch the multipurpose jack with sharp tools or cause an impact to the multipurpose jack

Conductive materials may cause a short circuit or corrosion of the terminals, which may result in an explosion or fire.

Do not bite or suck the device

- Doing so may damage the device or result in an explosion or fire.
- Children or animals can choke on small parts.
- If children use the device, make sure that they use the device properly.

Do not insert the device or supplied accessories into the eyes, ears, or mouth

Doing so may cause suffocation or serious injuries.

Do not handle a damaged or leaking Lithium Ion (Li-Ion) battery

For safe disposal of your Li-Ion battery, contact your nearest authorized service centre.



Caution: Failure to comply with safety cautions and regulations can cause injury or property damage

Do not use your device near other electronic devices

- Most electronic devices use radio frequency signals. Your device may interfere with other electronic devices.

Do not use your device in a hospital, on an aircraft, or in automotive equipment that can be interfered with by radio frequency

- Avoid using your device within a 15 cm range of a pacemaker, if possible, as your device can interfere with the pacemaker.
- If you use medical equipment, contact the equipment manufacturer before using your device to determine whether or not the equipment will be affected by radio frequencies emitted by the device.
- On an aircraft, using electronic devices can interfere with the aircraft's electronic navigational instruments. Make sure the device is turned off during takeoff and landing.
- Electronic devices in your car may malfunction due to radio interference from your device. Contact the manufacturer for more information.

Do not expose the device to heavy smoke or fumes

- Doing so may damage the outside of the device or cause it to malfunction.

If you use a hearing aid, contact the manufacturer for information about radio interference

The radio frequency emitted by your device may interfere with some hearing aids. Before using your device, contact the manufacturer to determine whether or not your hearing aid will be affected by radio frequencies emitted by the device.

Do not use your device near devices or apparatuses that emit radio frequencies, such as sound systems or radio towers

Radio frequencies may cause your device to malfunction.

Turn off the device in potentially explosive environments

- Turn off your device in potentially explosive environments instead of removing the battery.
- Always comply with regulations, instructions and signs in potentially explosive environments.
- Do not use your device at refuelling points (gas stations), near fuels or chemicals, or in blasting areas.
- Do not store or carry flammable liquids, gases, or explosive materials in the same compartment as the device, its parts, or accessories.

If you notice strange smells or sounds coming from your device, or if you see smoke or liquids leaking from the device, stop using the device immediately and take it to a Samsung Service Centre

Failure to do so may result in fire or explosion.

Comply with all safety warnings and regulations regarding mobile device usage while operating a vehicle

While driving, safely operating the vehicle is your first responsibility. Never use your mobile device while driving, if it is prohibited by law. For your safety and the safety of others, use your common sense and remember the following tips:

- Get to know your device and its convenience features.
- Suspend use in heavy traffic or hazardous weather conditions. Rain, sleet, snow, ice, and heavy traffic can be hazardous.
- Do not take notes or look up phone numbers. Jotting down a “to do” list or flipping through your address book takes attention away from your primary responsibility of driving safely.

- Do not engage in stressful or emotional conversations that may be distracting. Make the person you are talking to aware that you are driving and suspend conversations that could potentially divert your attention from the road.

Care for and use your mobile device properly

Keep your device dry

- Humidity and liquids may damage the parts or electronic circuits in your device.
- Do not turn on your device if it is wet. If your device is already on, turn it off (if the device will not turn off, leave it as-is). Then, dry the device with a towel and take it to a service centre.
- This device has internal liquid indicators fitted. Water damage to your device may void the manufacturer's warranty.

Store your device only on flat surfaces

- If your device falls, it may be damaged.

The device can be used in locations with an ambient temperature of 0°C to 35°C. You can store the device at an ambient temperature of -20°C to 50°C. Using or storing the device outside of the recommended temperature ranges may damage the device or reduce the battery's lifespan

- Do not store your device in very hot areas such as inside a car in the summertime. Doing so may cause the screen to malfunction, result in damage to the device, or cause the battery to explode.
- Do not expose your device to direct sunlight for extended periods of time (on the dashboard of a car, for example).

Do not store your device with metal objects, such as coins, keys, and necklaces

- Your device may be scratched or may malfunction.
- If the charging terminals come into contact with metal objects, this may cause a fire.

Do not store your device near magnetic fields

- Your device may malfunction or the battery may discharge from exposure to magnetic fields.
- Magnetic stripe cards, including credit cards, phone cards, passbooks, and boarding passes, may be damaged by magnetic fields.

Prolonged exposure of your skin to an overheated device may cause low temperature burn symptoms, such as red spots and pigmentation

Protect your hearing and ears



- Excessive exposure to loud sounds can cause hearing damage.
- Exposure to loud sounds while walking may distract your attention and cause an accident.
- Always turn the volume down before connecting the earbuds to an audio source and use only the minimum volume setting necessary to hear your conversation or music.
- In dry environments, static electricity can build up in the earbuds. Avoid using earbuds in dry environments or touch a metal object to discharge static electricity.
- Do not use earbuds while driving or riding. Doing so may distract your attention and cause an accident, or may be illegal, depending on your region.

Use caution when using the device while walking or moving

- Always be aware of your surroundings to avoid injury to yourself or others..

Do not paint or put stickers on your device

- Paint and stickers can clog moving parts and prevent proper operation.
- If you are allergic to paint or metal parts of the device, you may experience itching, eczema, or swelling of the skin. When this happens, stop using the device and consult your physician.

Do not drop your device or cause impacts to your device

- Your device may be damaged or may malfunction.
- If bent or deformed, your device may be damaged or parts may malfunction.

Ensure maximum battery and charger life

- Batteries may malfunction if they are not used for extended periods.
- Over time, unused device will discharge and must be recharged before use.
- Disconnect the charger from power sources when not in use.
- Follow all instructions in this manual to ensure the longest lifespan of your device and battery. Damage or poor performance caused by failure to follow warnings and instructions can void your manufacturer's warranty.
- Your device may wear out over time. Some parts and repairs are covered by the warranty within the validity period, but damages or deterioration caused by using unapproved accessories are not.

Do not disassemble, modify, or repair your device

- Any changes or modifications to your device can void your manufacturer's warranty. If your device needs servicing, take your device to a Samsung Service Centre.
- Do not disassemble or puncture the battery, as this can cause explosion or fire.

When cleaning your device, mind the following

- Wipe your device or charger with a towel or an eraser.
- Do not use chemicals or detergents. Doing so may discolour or corrode the outside the device or may result in electric shock or fire.

Do not use the device for anything other than its intended use

- Your device may malfunction.

Avoid disturbing others when using the device in public

Allow only qualified personnel to service your device

- Allowing unqualified personnel to service your device may result in damage to your device and will void your manufacturer's warranty.

Acknowledging Special Precautions and ISED (Innovation, Science and Economic Development Canada) Notice

Cautions

Any changes or modifications to your device not expressly approved in this document could void your warranty for this equipment, and void your authority to operate this equipment. Only use approved batteries, antennas, and chargers. The use of any unauthorized accessories may be dangerous and void the phone warranty if they cause damage or a defect to the device.

Although your device is quite sturdy, it is a complex piece of equipment and can be broken. Avoid dropping, hitting, bending, or sitting on it.

Information to User

This equipment has been tested and found to comply with the limits of a Class B digital device. These limits are designed to provide reasonable protection against harmful interference in a residential installation. This equipment generates, uses, and can radiate radio frequency energy and, if not installed and used in accordance with the instructions, may cause harmful interference to radio communications. However, there is no guarantee that interference will not occur in a particular installation; if this equipment does cause harmful interference to radio or television reception, which can be determined by turning the equipment off and on, the user is encouraged to try to correct the interference by one or more of the following measures:

- Reorient/relocate the receiving antenna.
- Increase the separation between the equipment and receiver.
- Connect the equipment into an outlet on a circuit different from that to which the receiver is connected.
- Consult the dealer or an experienced radio/TV technician for help.



Warning: At very high volumes, prolonged listening to a headset can damage your hearing.

IC RF Radiation Exposure Statement:

This equipment complies with IC RF Radiation exposure limits set forth for an uncontrolled environment.

This device and its antenna must not be co-located or operating in conjunction with any other antenna or transmitter.

Specific Absorption Rates (SAR) for Wireless Devices

The SAR is a value that corresponds to the relative amount of RF energy absorbed by the user of a wireless device.

The SAR value of a device is the result of an extensive testing, measuring and calculation process. It does not represent how much RF the device emits. All devices are tested at their highest value in strict laboratory settings. But when in operation, the SAR of a device can be substantially less than the level reported to ISED. This is because of a variety of factors including its proximity to a base station antenna, design and other factors. What is important to remember is that each device meets strict federal guidelines. Variations in SARs do not represent a variation in safety.

All devices must meet the federal standard, which incorporates a substantial margin of safety. As stated above, variations in SAR values between different model devices do not mean variations in safety. SAR values at or below the federal standard of 1.6 W/kg are considered safe for use by the public.

This device has been tested and meets RF exposure guidelines when used with an accessory that contains no metal and that positions the mobile device 0mm from the body.

Correct disposal of this product

(Waste Electrical & Electronic Equipment)



This marking on the product, accessories or literature indicates that the product and its electronic accessories (e.g., charger, headset, USB cable) should not be disposed of with other household waste.

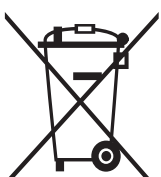
To prevent possible harm to the environment or human health from uncontrolled waste disposal, please separate these items from other types of waste and recycle them responsibly to promote the sustainable reuse of material resources.

Household users should contact either the retailer where they purchased this product, or their local government office, for details of where and how they can take these items for environmentally safe recycling.

Business users should contact their supplier and check the terms and conditions of the purchase contract. This product and its electronic accessories should not be mixed with other commercial wastes for disposal.

This product is RoHS compliant.

Correct disposal of batteries in this product



This marking on the battery, manual or packaging indicates that the batteries in this product should not be disposed of with other household waste at the end of their working life. Where marked, the chemical symbols Hg, Cd or Pb indicate that the battery contains mercury, cadmium or lead above the reference levels in EC Directive 2006/66.

Disclaimer

Some content and services accessible through this device belong to third parties and are protected by copyright, patent, trademark and/or other intellectual property laws. Such content and services are provided solely for your personal non-commercial use. You may not use any content or services in a manner that has not been authorized by the content owner or service provider. Without limiting the foregoing, unless expressly authorized by the applicable content owner or service provider, you may not modify, copy, republish, upload, post, transmit, translate, sell, create derivative works, exploit, or distribute in any manner or medium any content or services displayed through this device.

“THIRD PARTY CONTENT AND SERVICES ARE PROVIDED “AS IS.” SAMSUNG DOES NOT WARRANT CONTENT OR SERVICES SO PROVIDED, EITHER EXPRESSLY OR IMPLIED, FOR ANY PURPOSE. SAMSUNG EXPRESSLY DISCLAIMS ANY IMPLIED WARRANTIES, INCLUDING BUT NOT LIMITED TO, WARRANTIES OF MERCHANTABILITY OR FITNESS FOR A PARTICULAR PURPOSE. SAMSUNG DOES NOT GUARANTEE THE ACCURACY, VALIDITY, TIMELINESS, LEGALITY, OR COMPLETENESS OF ANY CONTENT OR SERVICE MADE AVAILABLE THROUGH THIS DEVICE AND UNDER NO CIRCUMSTANCES, INCLUDING NEGLIGENCE, SHALL SAMSUNG BE LIABLE, WHETHER IN CONTRACT OR TORT, FOR ANY DIRECT, INDIRECT, INCIDENTAL, SPECIAL OR CONSEQUENTIAL DAMAGES, ATTORNEY FEES, EXPENSES, OR ANY OTHER DAMAGES ARISING OUT OF, OR IN CONNECTION WITH, ANY INFORMATION CONTAINED IN, OR AS A RESULT OF THE USE OF ANY CONTENT OR SERVICE BY YOU OR ANY THIRD PARTY, EVEN IF ADVISED OF THE POSSIBILITY OF SUCH DAMAGES.”

Third party services may be terminated or interrupted at any time, and Samsung makes no representation or warranty that any content or service will remain available for any period of time. Content and services are transmitted by third parties by means of networks and transmission facilities over which Samsung has no control. Without limiting the generality of this disclaimer, Samsung expressly disclaims any responsibility or liability for any interruption or suspension of any content or service made available through this device.

Samsung is neither responsible nor liable for customer service related to the content and services. Any question or request for service relating to the content or services should be made directly to the respective content and service providers.

Copyright

Copyright © 2019 Samsung Electronics

This manual is protected under international copyright laws.

No part of this manual may be reproduced, distributed, translated, or transmitted in any form or by any means, electronic or mechanical, including photocopying, recording, or storing in any information storage and retrieval system, without the prior written permission of Samsung Electronics.

Trademarks

- SAMSUNG and the SAMSUNG logo are registered trademarks of Samsung Electronics.
- Bluetooth® is a registered trademark of Bluetooth SIG, Inc. worldwide.



- All other trademarks and copyrights are the property of their respective owners.

ISED Notice

This Class B digital apparatus complies with Canadian ICES-003.

This device complies with Innovation, Science and Economic Development Canada licence-exempt RSS standard(s). Operation is subject to the following two conditions:

- (1) this device may not cause interference, and
- (2) this device must accept any interference, including interference that may cause undesired operation of the device.